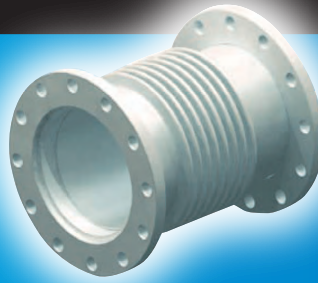


Axial Free Type Single Expansion Joint

# SJT1100 Series

The simplest form of Expansion Joint, of single bellows construction, for the purpose of absorbing axial movement of the pipe section in which it is installed.



## Feature

### Absorption for thermal expansion

Bellow Expansion Joints are employed in piping systems to absorb differential thermal expansion while containing the system pressure.

### Maximize the productivity

Standard design of movement and material maximizes the productivity while the custom design maximizes the suitability for special applications.

### Reliability

Computer designed bellows element complies with EJMA criteria.

### Quality

All products are tested before delivery according to relevant code or ISO quality control system.

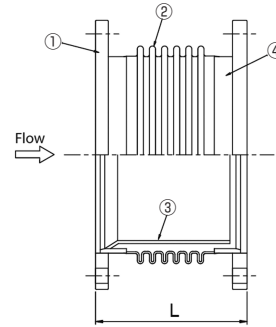
Design Working Pressure	1.0 MPa
Design Working Temperature	250°C
Applicable Fluid	Water, Hot Water, Oil, Steam, Gas, and Exhaust Air

## Applications

Bellows type metal Expansion Joints are successfully utilized in refineries, chemical plants, fossil and power systems, heating and cooling system, and cryogenic plants.

## Structure

SJT1100



No.	Parts	Material
①	Flange	SS400
②	Bellow	SUS304
③	Inner sleeve	SUS304
④	Pipe	CS/SUS

## Dimensions and Allowable Movements

Size [A]	L	Axial Movement [mm]	Axial Spring Rate [N/mm]	Effective Area [cm <sup>2</sup> ]
40	250	25	80.9	26.0
50	250	25	80.7	28.3
65	250	35	80.2	48.3
80	250	35	89.8	66.5
100	275	35	105.2	131.0
125	275	35	100.8	197.7
150	300	35	135.5	264.9
200	300	35	166.1	439.5
250	350	35	168.9	678.8
300	350	35	181.7	951.2
350	350	35	225.4	1125.5
400	350	35	245.0	1450.2
450	375	35	311.5	1852.0
500	375	35	341.1	2260.6
600	375	35	474.4	3262.9

## Installation Guide

Shipping devices (painted yellow) must be removed prior to start-up or testing the system. Please consult us for other material, pressure, temperature and movement designs. Please read the instruction before designing and installation.

**Note:** The content of this catalog is subject to change without prior notice.

**TOZEN Corporation**

8-4, Asahi, Yoshikawa  
Saitama 342-0008 Japan

WE50-1404

